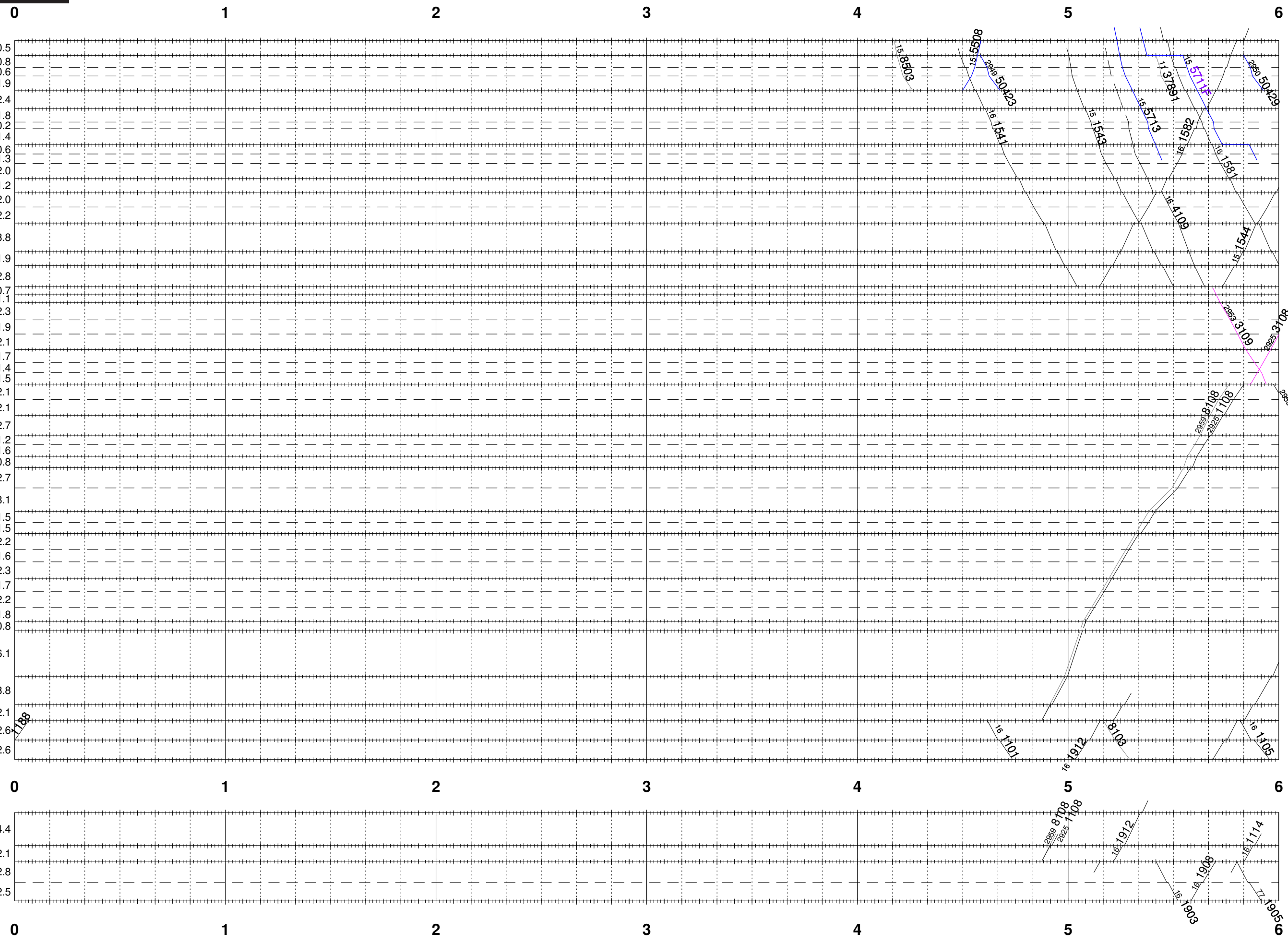
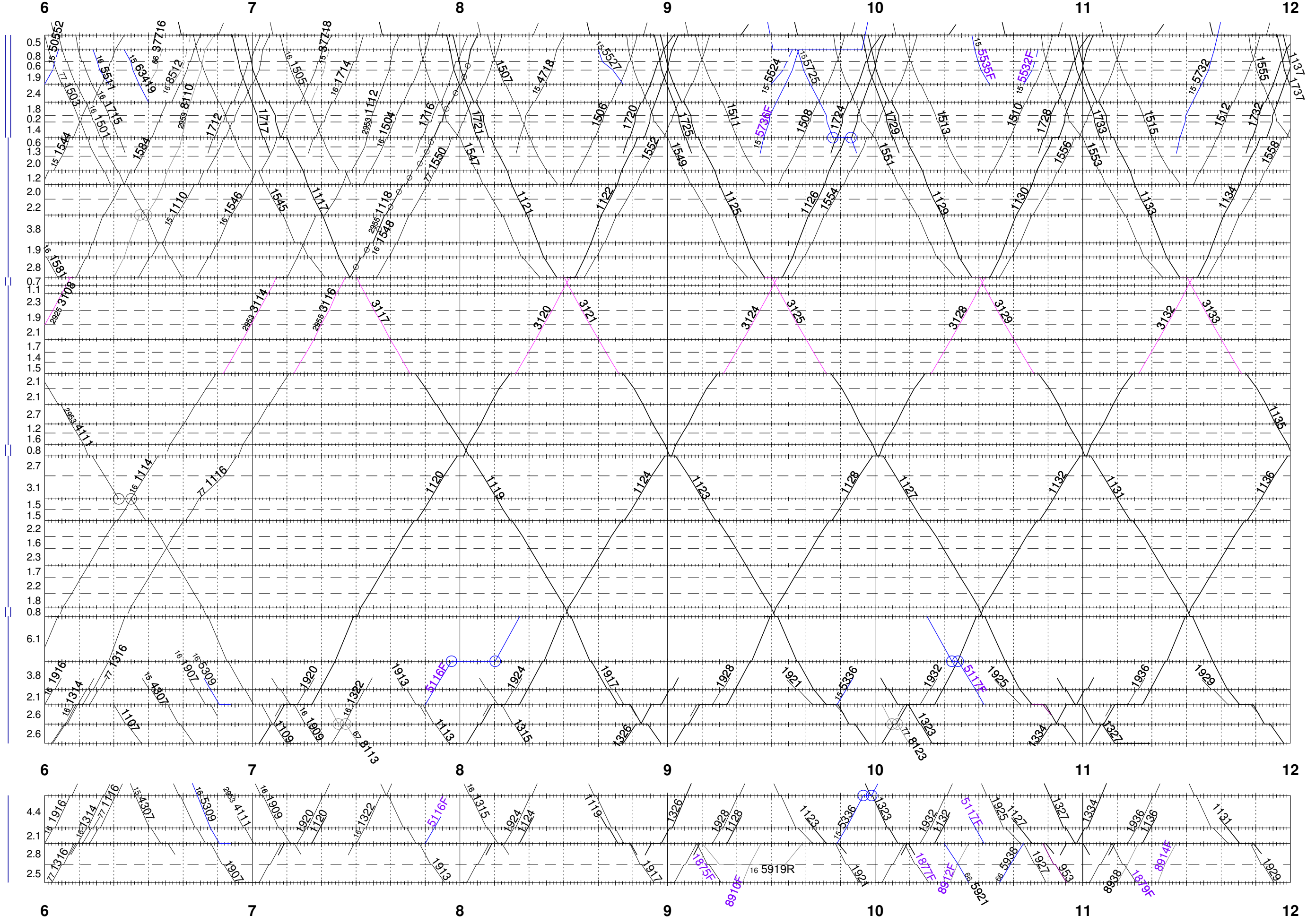


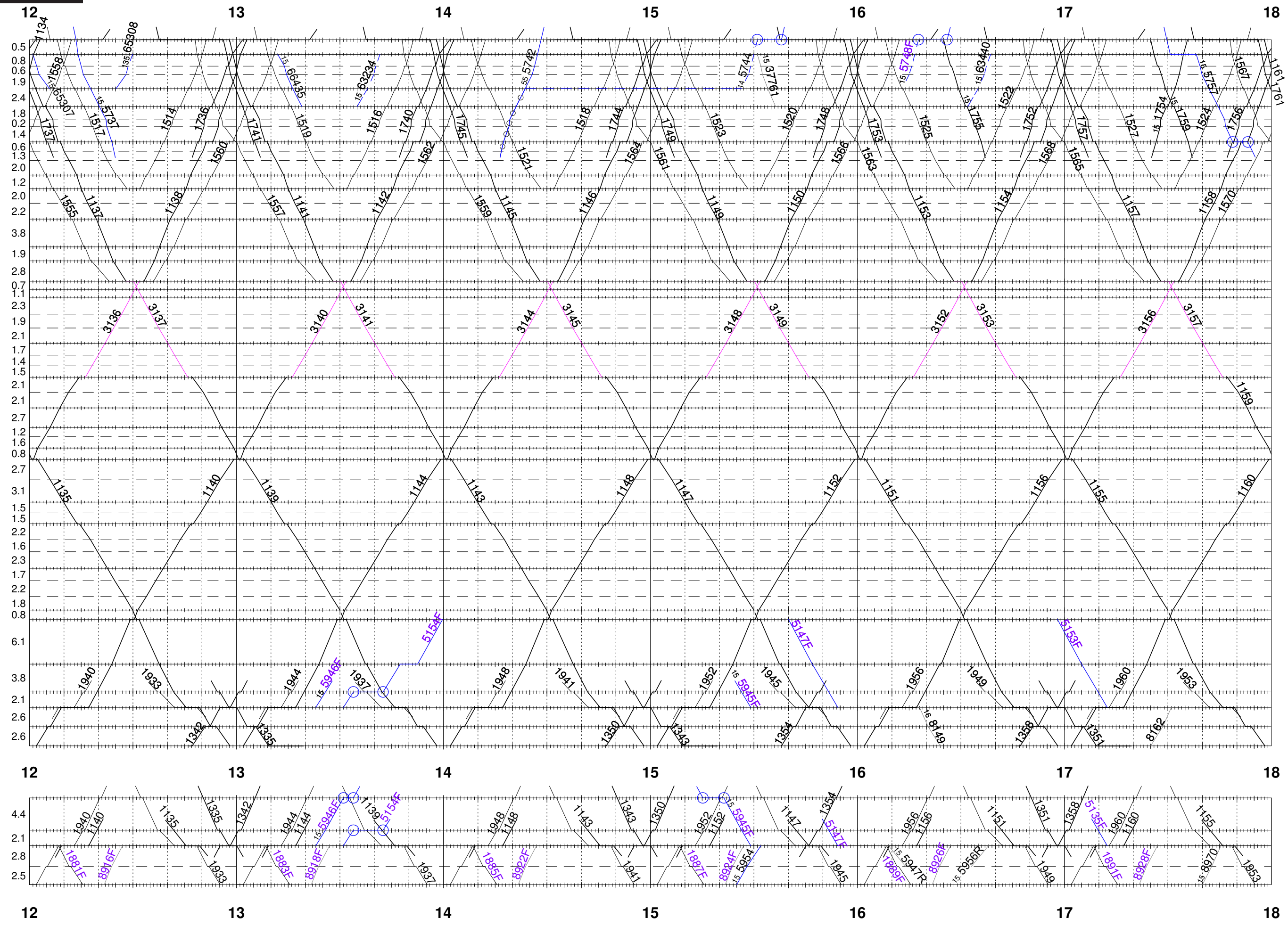
Station	km
Chur	13.7
Chur GB	13.9
Chur West	14.4
Foral (B)	15.2
Felsberg	15.8
	17.7
Domat/Ems	20.2
Ems Werk (B)	20.2
Ems Werk	22.2
Reichenau-Tamins	23.6
Reichenau Farsch (ABZW)	24.2
Gurgs (B)	25.5
Bonaduz	27.4
Rhâzüns	28.7
Undrau (B)	30.6
Rothenbrunnen	32.8
	38.8
Rodels-Realta	36.6
Cazis	38.5
	2.8
Thusis	41.3
Thusis Süd	42.0
Sils im Domleschg	43.1
	2.3
Cugniel (B)	45.4
Passmal (B)	47.3
Solis	49.3
Alvaschein (B)	51.1
Salons (B)	52.4
Tiefencastel	53.9
Brienz GR (B)	56.0
Surava	58.1
	2.7
Alvaneu	60.8
Funtauna cotschna (B)	62.0
Filisur Nord	63.6
Filisur	64.4
	0.8
Cruschetta (B)	67.1
	2.7
Stugl/Stuls	70.2
Bergüner Stein (B)	71.7
Bergün/Bravuogn	73.1
	2.2
Bellavista GR (B)	75.3
Sagliaz (B)	76.9
	1.6
Muot	79.2
Val Rots (B)	80.9
	1.7
Maliera (B)	83.0
	2.2
Preda Nord	84.9
Preda	85.7
	1.8
	0.8
	6.1
Spinas	91.8
	3.8
Bever	95.6
Samedan	97.7
	2.1
Celerina	100.3
	2.6
St. Moritz	102.9
	2.6
	0
La Punt-Chamues-ch	100.0
	4.4
Bever	95.6
Samedan	97.7
Punt Muragl	100.5
Pontresina	103.0



Chur	13.7
Chur GB	13.9
Chur West	14.4
Foral (B)	15.2
Felsberg	15.8
Domat/Ems	17.7
Ems Werk (B)	20.2
Ems Werk	22.0
Reichenau-Tamins	22.2
Reichenau Farsch (ABZW)	23.6
Gurgs (B)	24.2
Bonaduz	25.5
Rhazüns	27.4
Undrau (B)	28.7
Rothenbrunnen	30.6
Rodels-Realta	32.8
Cazis	36.6
Thusis	38.5
Thusis Süd	41.3
Sils im Domleschg	42.0
Cugniel (B)	43.1
Passmal (B)	45.4
Solis	47.3
Alvaschein (B)	49.3
Salons (B)	51.1
Tiefencastel	52.4
Brienz GR (B)	53.9
Surava	56.0
Alvaneu	58.1
Funtauna cotschna (B)	60.8
Filisur Nord	62.0
Filisur	64.4
Cruschetta (B)	67.1
Stugl/Stuls	70.2
Bergüner Stein (B)	71.7
Bergün/Bravuogn	73.1
Bellavista GR (B)	75.3
Sagliaz (B)	76.9
Muot	79.2
Val Rots (B)	79.9
Maliera (B)	80.9
Preda Nord	83.0
Preda	84.9
Spinas	85.7
Bever	91.8
Samedan	95.6
Celerina	97.7
St. Moritz	100.3
La Punt-Chamues-ch	102.9
Bever	100.0
Samedan	95.6
Punt Muragl	97.7
Pontresina	100.5
	103.0



- Chur 13.7
- Chur GB 13.9
- Chur West 14.4
- Foral (B) 15.2
- Felsberg 15.8
- Felsberg 17.7
- Domat/Ems 20.2
- Ems Werk (B) 22.0
- Ems Werk 22.2
- Reichenau-Tamins 23.6
- Reichenau Farsch (ABZW) 24.2
- Gurgs (B) 25.5
- Bonaduz 27.4
- Rhazüns 28.7
- Undrau (B) 30.6
- Rothenbrunnen 32.8
- Rodels-Realta 36.6
- Cazis 38.5
- Thusis 41.3
- Thusis Süd 42.0
- Sils im Domleschg 43.1
- Cugniel (B) 45.4
- Passmal (B) 47.3
- Solis 49.3
- Alvaschein (B) 51.1
- Salons (B) 52.4
- Tiefencastel 53.9
- Brienz GR (B) 56.0
- Surava 58.1
- Alvaneu 60.8
- Funtauna cotschna (B) 62.0
- Filisur Nord 63.6
- Filisur 64.4
- Cruschetta (B) 67.1
- Stugl/Stuls 70.2
- Bergüner Stein (B) 71.7
- Bergün/Bravuogn 73.1
- Bellavista GR (B) 75.3
- Sagliaz (B) 76.9
- Muot 79.2
- Val Rots (B) 80.9
- Maliera (B) 83.0
- Preda Nord 84.9
- Preda 85.7
- Spinas 91.8
- Bever 95.6
- Samedan 97.7
- Celerina 100.3
- St. Moritz 102.9
- La Punt-Chamues-ch 100.0
- Bever 95.6
- Samedan 97.7
- Punt Muragl 100.5
- Pontresina 103.0



Chur	13.7
Chur GB	13.9
Chur West	14.4
Foral (B)	15.2
Felsberg	15.8
Domat/Ems	17.7
Ems Werk (B)	20.2
Ems Werk	22.2
Reichenau-Tamins	23.6
Reichenau Farsch (ABZW)	24.2
Gurgs (B)	25.5
Bonaduz	27.4
Rhazüns	28.7
Undrau (B)	30.6
Rothenbrunnen	32.8
Rodels-Realta	36.6
Cazis	38.5
Thusis	41.3
Thusis Süd	42.0
Sils im Domleschg	43.1
Cugniel (B)	45.4
Passmal (B)	47.3
Solis	49.3
Alvaschein (B)	51.1
Salons (B)	52.4
Tiefencastel	53.9
Brienz GR (B)	56.0
Surava	58.1
Alvaneu	60.8
Funtauna cotschna (B)	62.0
Filisur Nord	63.6
Filisur	64.4
Cruschetta (B)	67.1
Stugl/Stuls	70.2
Bergüner Stein (B)	71.7
Bergün/Bravuogn	73.1
Bellavista GR (B)	75.3
Sagliaz (B)	76.9
Muot	79.2
Val Rots (B)	80.9
Maliera (B)	83.0
Preda Nord	84.9
Preda	85.7
Spinas	91.8
Bever	95.6
Samedan	97.7
Celerina	100.3
St. Moritz	102.9
La Punt-Chamues-ch	100.0
Bever	95.6
Samedan	97.7
Punt Muragl	100.5
Pontresina	103.0

