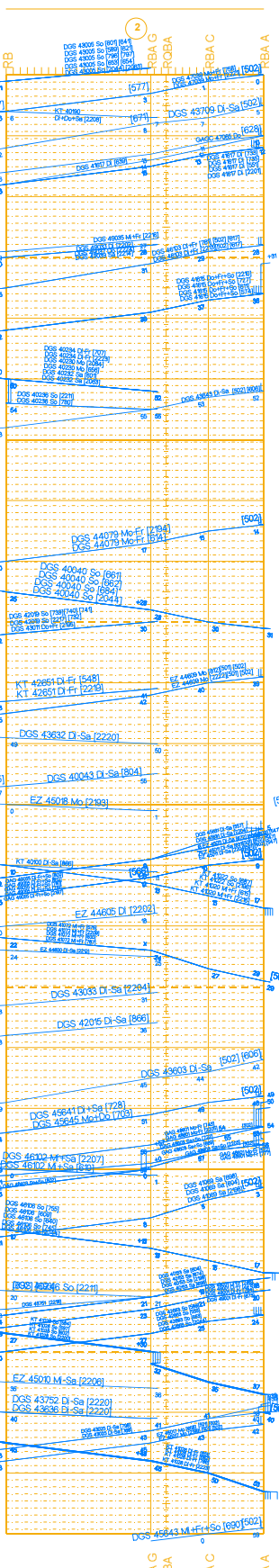
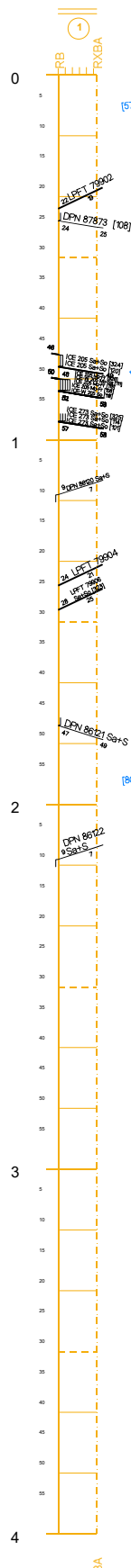


Stunden: 0 - 4

Table for Basel Bad BF, Basel Gr-Pb, showing routes and times.

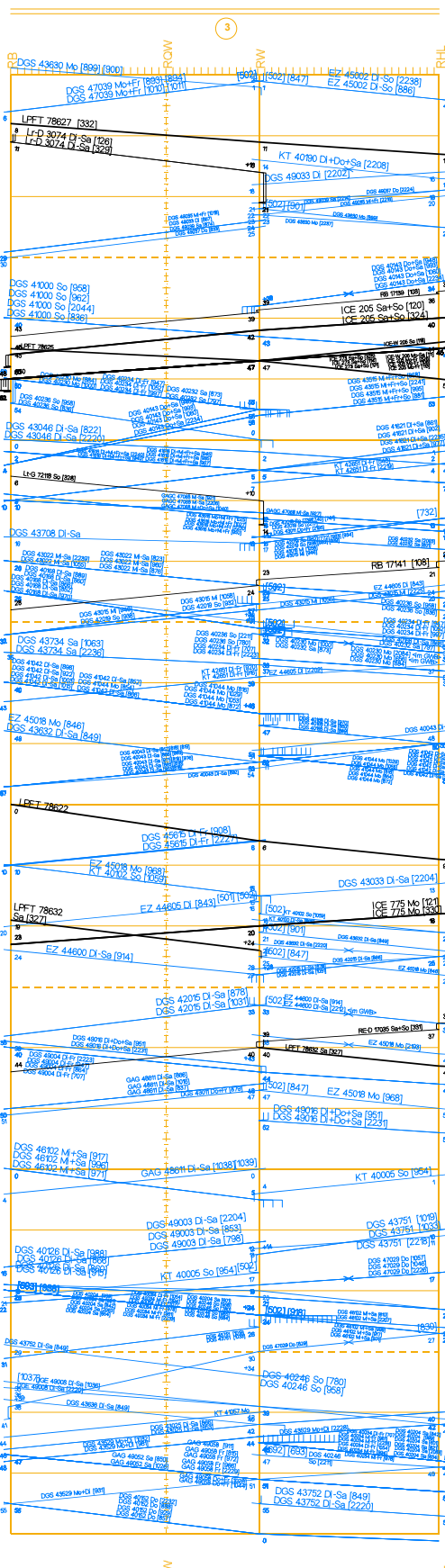
Table for Basel Bad BF, Basel Rb/(GrA), showing routes and times.



Summary table for Basel Bad BF routes.

Summary table for Basel Rb/(GrA) routes.

Table for Haltingen, showing routes and times.



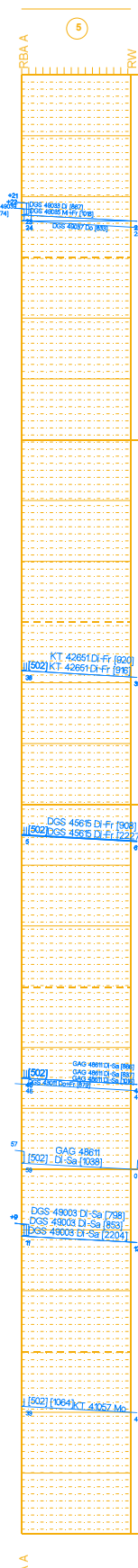
Summary table for Haltingen routes.

Table for Basel Bad Rbf, Weil (Schlaufe), showing routes and times.



Summary table for Basel Bad Rbf, Weil (Schlaufe) routes.

Table for Basel Bad Rbf, Weil (Sig)Bf, showing routes and times.



Summary table for Basel Bad Rbf, Weil (Sig)Bf routes.

Stunden: 0 - 4

Fahrpläne Basel N/S ab 10.12.2023

Stunden: 4 - 8

Table with 2 columns: Basel Bad Bf, Basel Gr-Pb. Rows include DGS, H, AM, and other codes with numerical values.

Table with 2 columns: Basel Bad Bf, Basel Rbf(Gr/A). Rows include H, H, AM, and other codes with numerical values.

Basel Bad Bf, BfH Einr SBB RB, Basel Bad Bf, BfH Rbf-Gr-L, Basel Rbf Lr, BfH Rbf-Gr-C, BfH Rbf-Gr-A

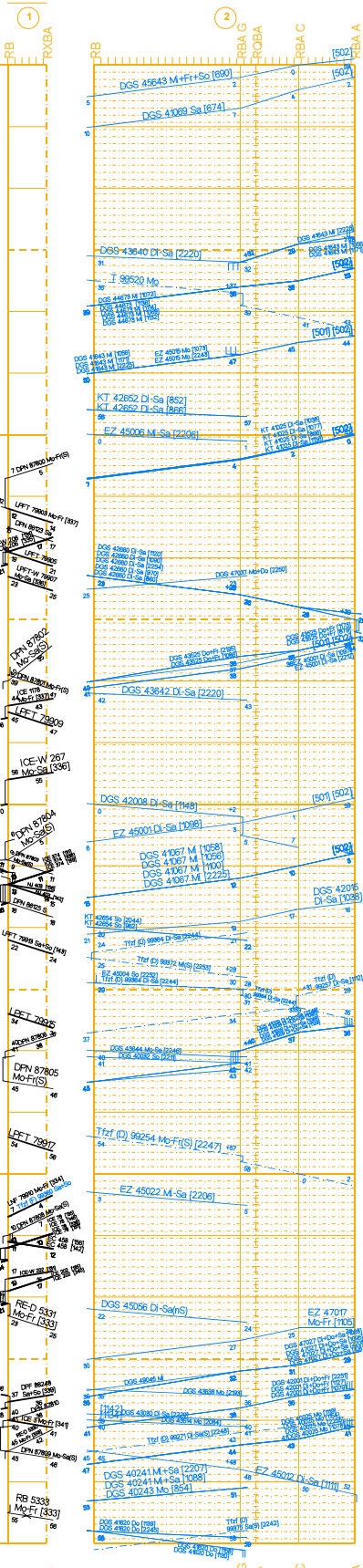


Table with 6 columns: RB, RXBA, RBA G, ROBA, RBA C, RBA A. Rows contain detailed train schedule data.

DB Netz, Niederlassung Südwest, Jahresfahrplan 2024 vom 10. Dezember 2023 bis 14. Dezember 2024, Gültig vom: 10. Dezember 2023 bis 08. Juni 2024 / täglich

Table with 2 columns: Basel Bad Rbf, Haltingen. Rows include DGS, H, AM, and other codes with numerical values.

Basel Bad Bf, Weil (Rhein) Lr, Weil am Rhein, Haltingen

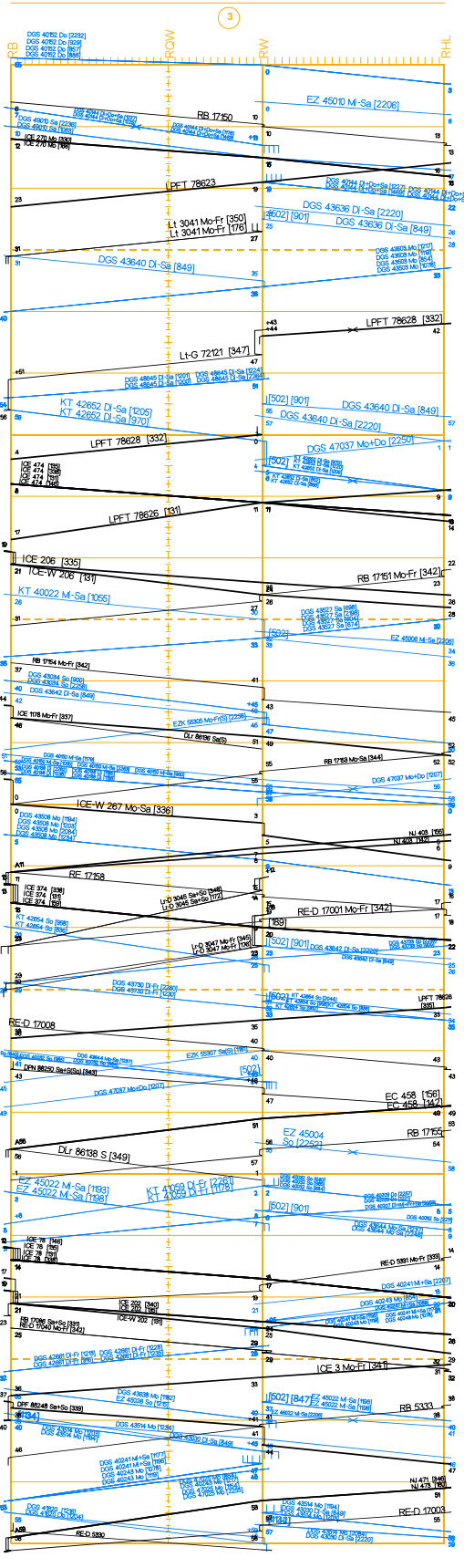


Table with 6 columns: RB, ROW, RW, RH-L, RBA A, RW. Rows contain detailed train schedule data.

Table with 2 columns: Basel Bad Rbf, Weil (Schlaufe). Rows include DGS, H, AM, and other codes with numerical values.

BfH Rbf-Gr-A, Weil am Rhein

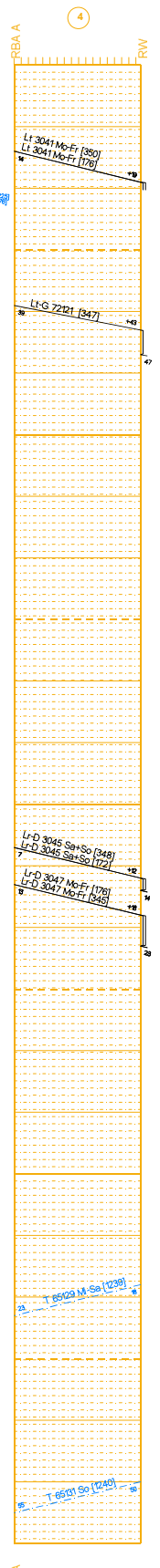


Table with 2 columns: RBA A, RW. Rows contain detailed train schedule data.

Table with 2 columns: Basel Bad Rbf, Weil (Sig10). Rows include DGS, H, AM, and other codes with numerical values.

BfH Rbf-Gr-A, Weil am Rhein

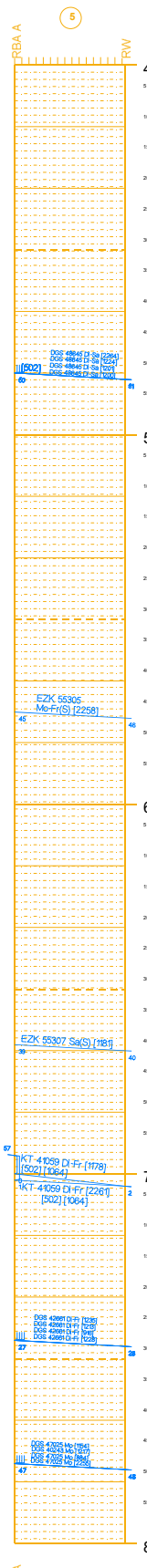


Table with 2 columns: RBA A, RW. Rows contain detailed train schedule data.

Fahrpläne Basel N/S ab 10.12.2023

Stunden: 4 - 8





Basel Gr-Pb	
0:00	
0:05	
0:10	
0:15	
0:20	
0:25	
0:30	
0:35	
0:40	
0:45	
0:50	
0:55	
1:00	

Basel Bad Bf	
Basel Rbf (Gr/A)	
0:00	
0:05	
0:10	
0:15	
0:20	
0:25	
0:30	
0:35	
0:40	
0:45	
0:50	
0:55	
1:00	

Basel Bad Rbf	
Haltingen	
0:00	
0:05	
0:10	
0:15	
0:20	
0:25	
0:30	
0:35	
0:40	
0:45	
0:50	
0:55	
1:00	

Basel Bad Rbf	
Weil (Schlaffe)	
0:00	
0:05	
0:10	
0:15	
0:20	
0:25	
0:30	
0:35	
0:40	
0:45	
0:50	
0:55	
1:00	

Basel Bad Rbf	
Weil (Sig10)	
0:00	
0:05	
0:10	
0:15	
0:20	
0:25	
0:30	
0:35	
0:40	
0:45	
0:50	
0:55	
1:00	

Basel Bad Bf  
BfH Ein/SBB RB

Basel Bad Bf  
BfH Rbf-Gr-L  
Basel Rbf-Gr  
BfH Rbf-Gr-C  
BfH Rbf-Gr-A

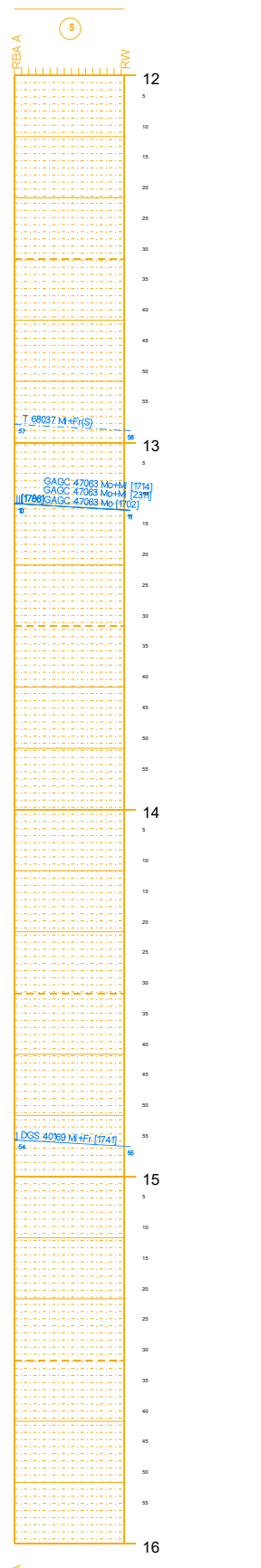
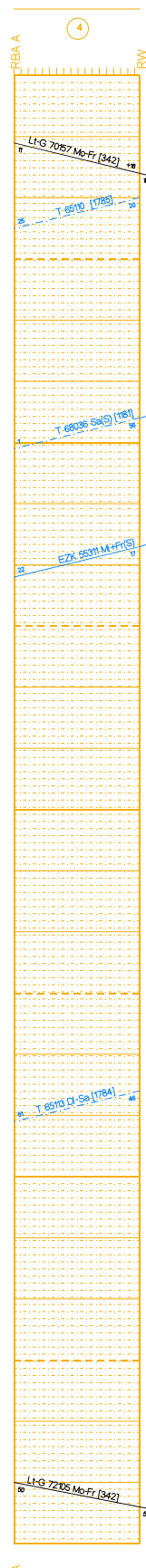
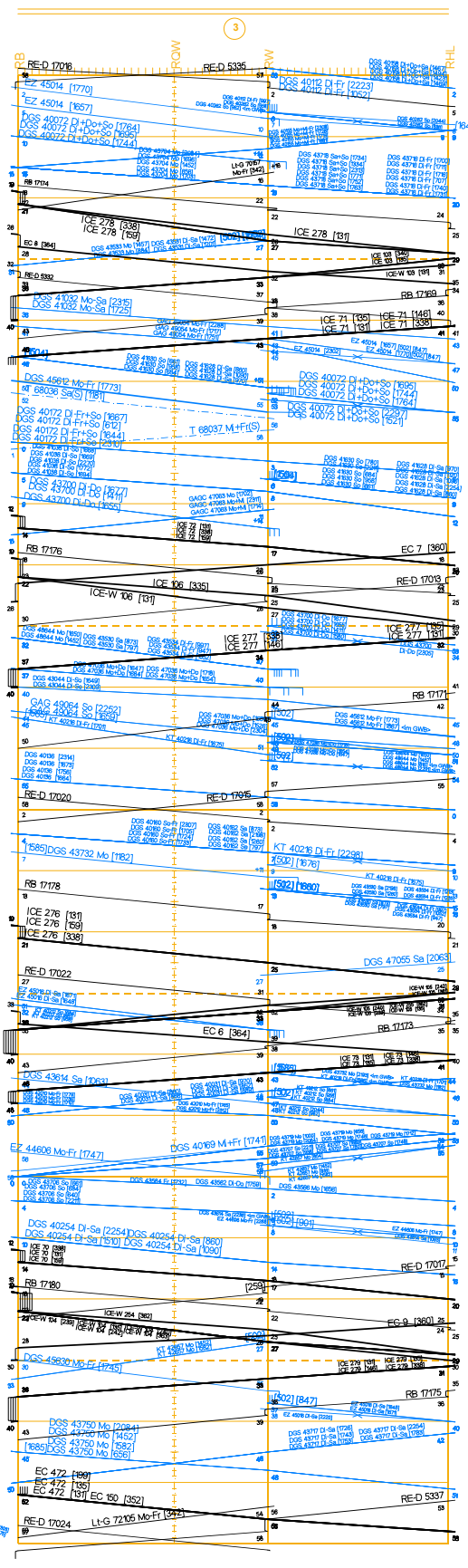
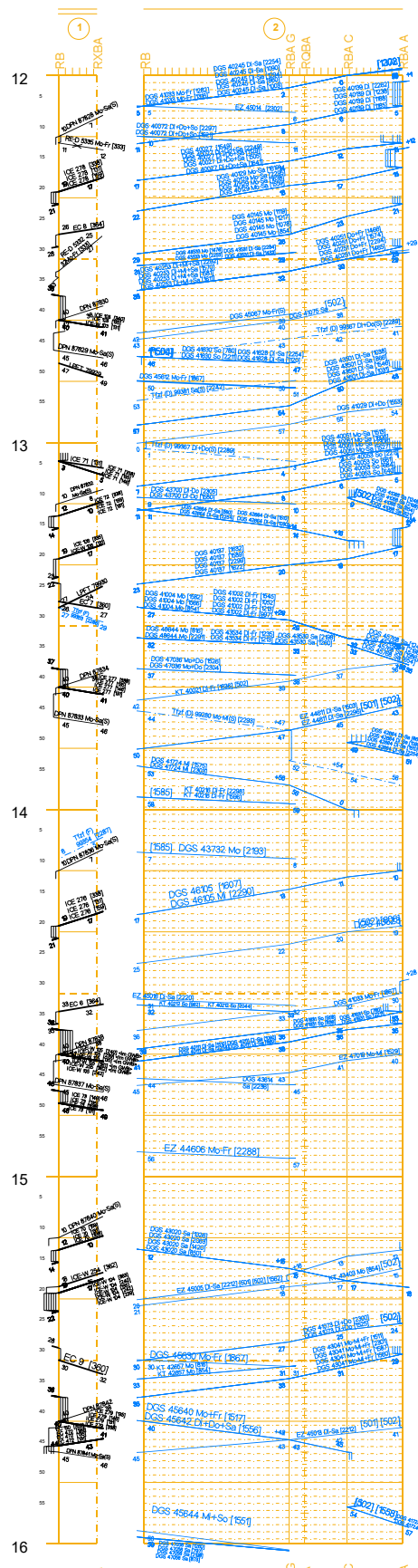
Basel Bad Bf

Weil (Rhein) Lr  
Weil am Rhein

Haltingen

BfH Rbf-Gr-A  
Weil am Rhein

BfH Rbf-Gr-A  
Weil am Rhein



12:00	12:05	12:10	12:15	12:20	12:25	12:30	12:35	12:40	12:45	12:50	12:55	13:00	13:05	13:10	13:15	13:20	13:25	13:30	13:35	13:40	13:45	13:50	13:55	14:00	14:05	14:10	14:15	14:20	14:25	14:30	14:35	14:40	14:45	14:50	14:55	15:00	15:05	15:10	15:15	15:20	15:25	15:30	15:35	15:40	15:45	15:50	15:55	16:00
-------	-------	-------	-------	-------	-------	-------	-------	-------	-------	-------	-------	-------	-------	-------	-------	-------	-------	-------	-------	-------	-------	-------	-------	-------	-------	-------	-------	-------	-------	-------	-------	-------	-------	-------	-------	-------	-------	-------	-------	-------	-------	-------	-------	-------	-------	-------	-------	-------

Table with 2 columns: Station (Basel Gr-Pb, Basel Bad Bf, BfH Einf SBB PB) and time slots (0.1, 0.2, 0.3, 0.4, 0.5).

Table with 2 columns: Station (Basel Bad Bf, Basel Rbf/GrA) and time slots (2.0, 2.1, 2.2, 2.3, 2.4, 2.5).



Table with 2 columns: Station (Basel Bad Rbf, Haltingen) and time slots (2.0, 2.1, 2.2, 2.3, 2.4, 2.5).



Table with 2 columns: Station (Basel Bad Rbf, Weil (Schluhre)) and time slots (1.4, 1.5, 1.6, 1.7, 1.8).



Table with 2 columns: Station (Basel Bad Rbf, Weil (Sig10)) and time slots (1.0, 1.1, 1.2, 1.3, 1.4, 1.5).

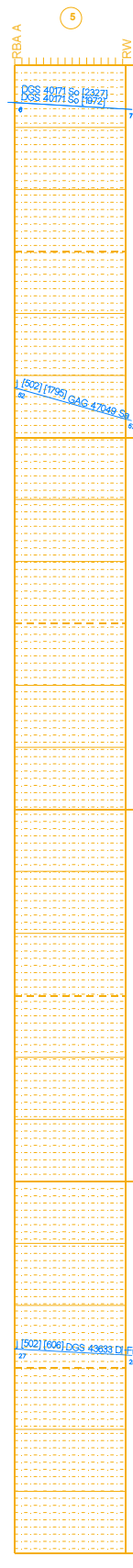
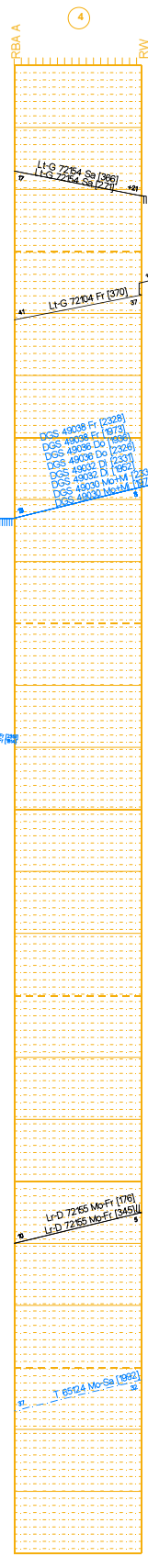
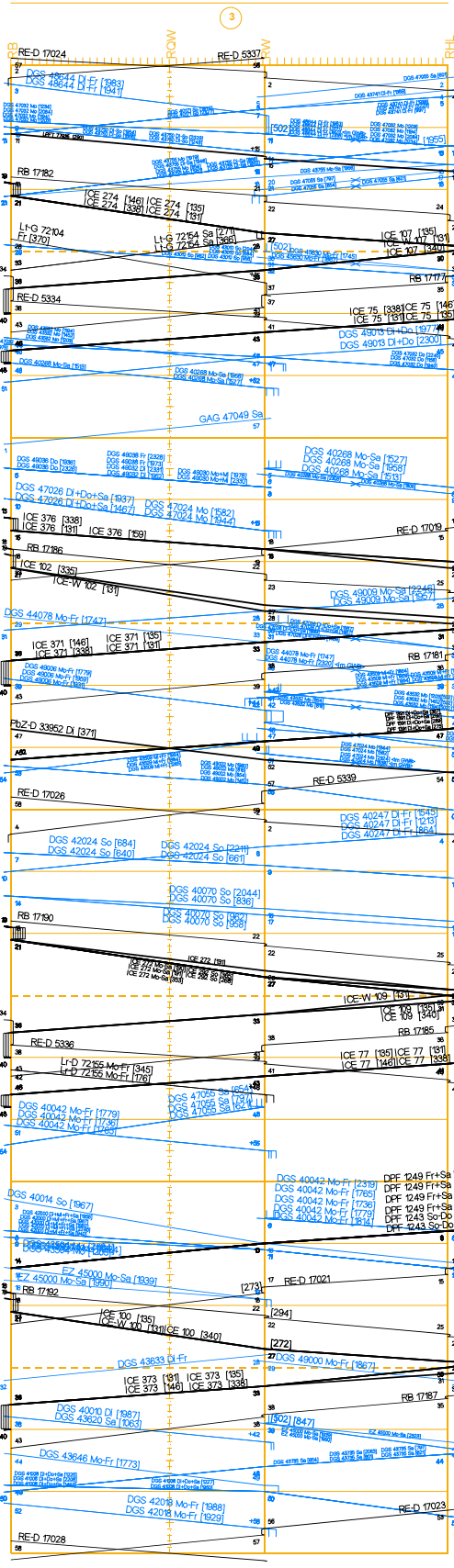
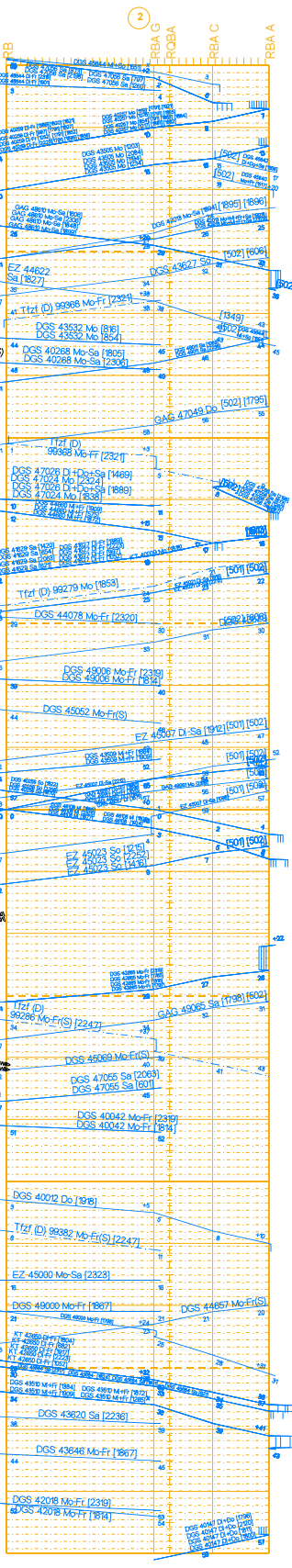
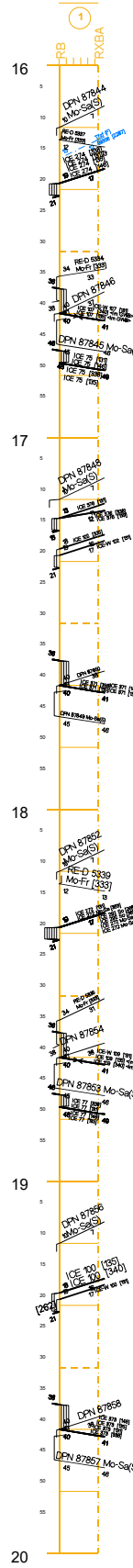


Table with 2 columns: Station (RB, RXBA) and time slots (1.0, 1.1, 1.2, 1.3, 1.4, 1.5).

Table with 2 columns: Station (RBA G, ROBA, RBA C, RBA A) and time slots (1.0, 1.1, 1.2, 1.3, 1.4, 1.5).

Table with 2 columns: Station (RB, ROW, RW, RH-L) and time slots (1.0, 1.1, 1.2, 1.3, 1.4, 1.5).

Table with 2 columns: Station (RBA A, RW) and time slots (1.0, 1.1, 1.2, 1.3, 1.4, 1.5).

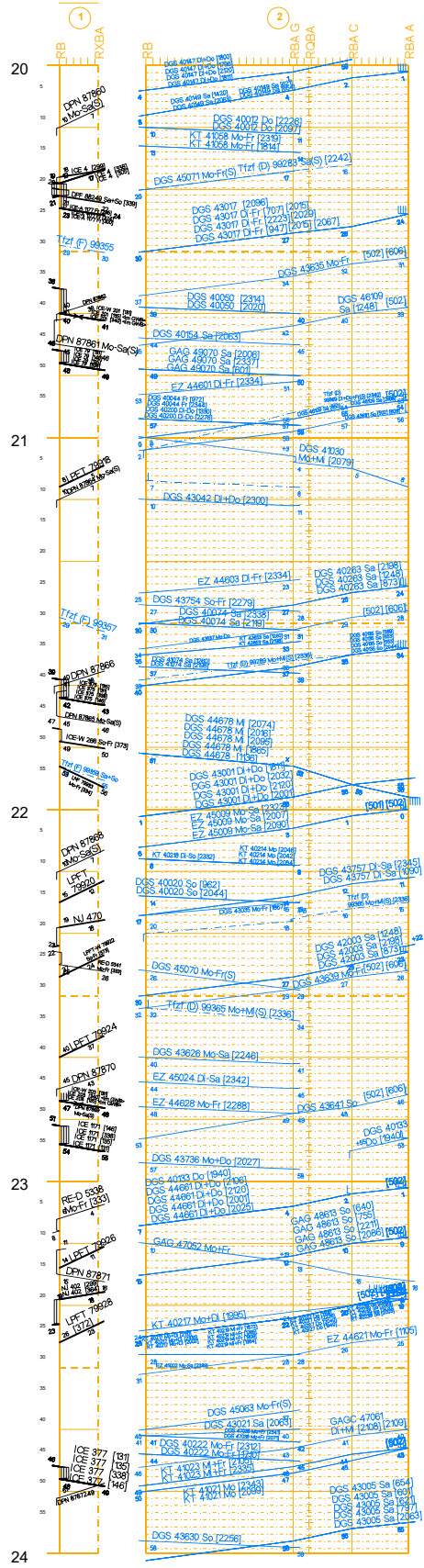
Table with 2 columns: Station (RBA A, RW) and time slots (1.0, 1.1, 1.2, 1.3, 1.4, 1.5).

Fahrpläne Basel N/S ab 10.12.2023  
Stunden: 20 - 24

Table with 2 columns: Time (0:00 to 24:00) and Frequency (1, 2, 3, 4, 5, 6, 7, 8, 9, 10, 11, 12, 13, 14, 15, 16, 17, 18, 19, 20, 21, 22, 23, 24).

Table with 2 columns: Station (Basel Bad Bf, Basel Rbf (GrA)) and Frequency (1, 2, 3, 4, 5, 6, 7, 8, 9, 10, 11, 12, 13, 14, 15, 16, 17, 18, 19, 20, 21, 22, 23, 24).

Basel Bad Bf  
BfH BfH SBB PB  
Basel Bad Bf  
BfH BfH SBB PB

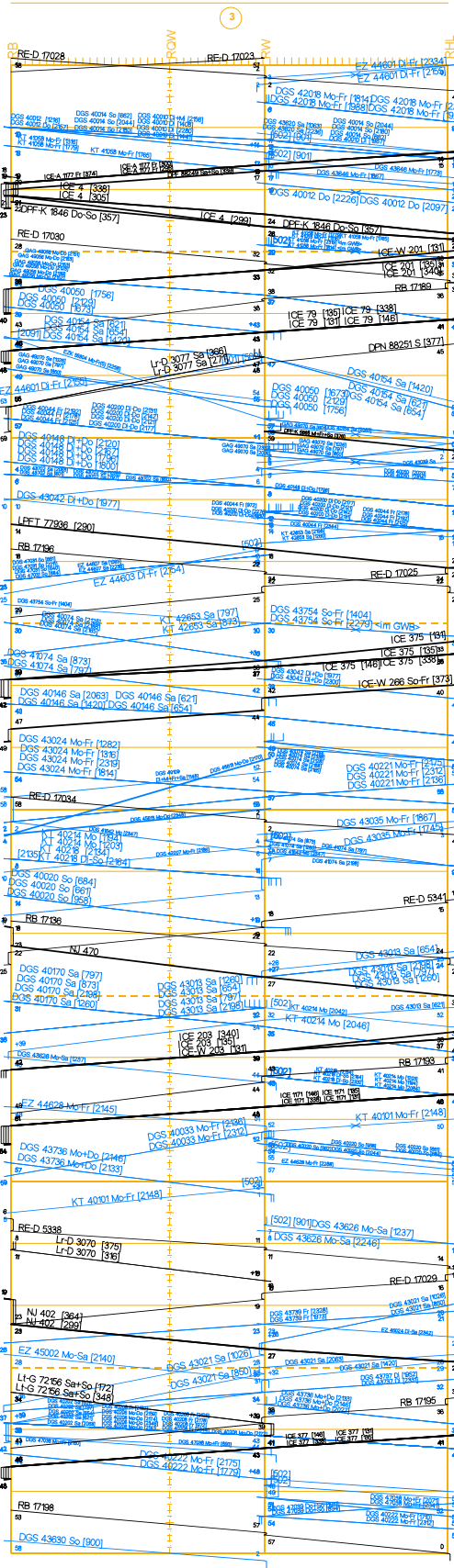


Summary table for Basel N/S routes, listing station names and frequencies.

Niederlassung Südwest  
Jahresfahrplan 2024 vom 10. Dezember 2023 bis 14. Dezember 2024  
Gültig vom 10. Dezember 2023 bis 08. Juni 2024 / täglich

Table with 2 columns: Station (Basel Bad Rbf, Haltingen) and Frequency (1, 2, 3, 4, 5, 6, 7, 8, 9, 10, 11, 12, 13, 14, 15, 16, 17, 18, 19, 20, 21, 22, 23, 24).

Basel Bad Bf  
Weil (Rhein) Lr  
Weil am Rhein  
Haltingen



Summary table for Niederlassung Südwest routes, listing station names and frequencies.

Fahrpläne Basel N/S ab 10.12.2023  
Stunden: 20 - 24

Table with 2 columns: Station (Basel Bad Rbf, Weil (Schluffe)) and Frequency (1, 2, 3, 4, 5, 6, 7, 8, 9, 10, 11, 12, 13, 14, 15, 16, 17, 18, 19, 20, 21, 22, 23, 24).

Basel Bad Rbf  
Weil (Schluffe)  
Basel Bad Rbf  
Weil (Schluffe)

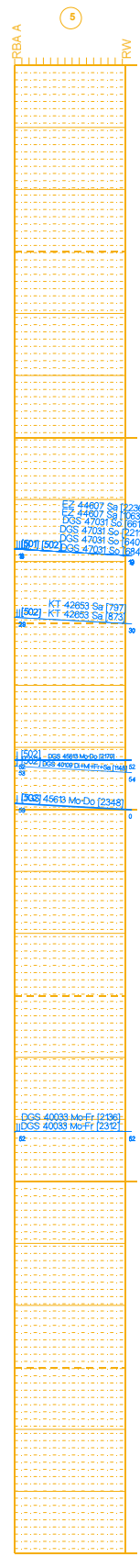


Summary table for Weil (Schluffe) routes, listing station names and frequencies.

Fahrpläne Basel N/S ab 10.12.2023  
Stunden: 20 - 24

Table with 2 columns: Station (Basel Bad Rbf, Weil (Sigfl)) and Frequency (1, 2, 3, 4, 5, 6, 7, 8, 9, 10, 11, 12, 13, 14, 15, 16, 17, 18, 19, 20, 21, 22, 23, 24).

Basel Bad Rbf  
Weil (Sigfl)  
Basel Bad Rbf  
Weil (Sigfl)



Summary table for Weil (Sigfl) routes, listing station names and frequencies.